



THE SCHOOL DISTRICT OF
PHILADELPHIA



William McKinley School

Annual Title I Meeting

Wednesday, September 13, 2023
4:30 PM to 6:30 PM

WHAT IS TITLE I?

- ❖ The federal government provides Title I funding to states each year. These funds are disseminated to each School District (LEA). The District is then responsible for distributing these funds to all our schools based on two criteria:
 - ❖ Formula based on low-income status
 - ❖ Title I School Designation
- ❖ Each Spring during the budget process, our school decides how best to use our Title I funds based on a needs assessment with the guidance of school leadership, parents and community members.

OUR SCHOOL NEEDS YOUR HELP EACH SPRING TO WORK WITH SCHOOL STAFF AND DEVELOP:

- ❖ The Parent and Family Engagement Policy
- ❖ The School-Parent Compact
- ❖ The Schoolwide Plan
- ❖ The School Budget

SCHOOL DISTRICT OF PHILADELPHIA

PARENT AND FAMILY ENGAGEMENT POLICY

- ❖ The School District of Philadelphia, with the input of parents, develops a written, district-wide Parent and Family Engagement Policy.
- ❖ If you are interested in providing suggestions and/or recommendations at the District level, please contact your school's Family Engagement Liaison or the Office of Family and Community Engagement (215-400-4180).

SCHOOL-BASED PARENT AND FAMILY ENGAGEMENT POLICY

❖ Discusses how:

- ❖ We will involve parents in the process of school review and improvement
- ❖ We will provide the necessary technical assistance to parents that will support and improve student academic achievement
- ❖ We will build parents' capacity for strong parental involvement to improve student academic achievement
- ❖ Parents are involved in the development, evaluation and revision of the Parent and Family Engagement Policy

SCHOOL-PARENT COMPACT

- ❖ The Compact states the goals and responsibilities of the school in providing a quality education to all students and identifying interventions for students who are struggling academically.
- ❖ The Compact states the responsibilities of parents and students in helping the school to meet these goals.

TITLE I SCHOOL DESIGNATIONS

- ❖ In Pennsylvania, all schools are given a designation of Comprehensive Support and Improvement (CSI), Targeted Support and Improvement (TSI), Additional Targeted Support & Improvement (ATSI) or Non-Designated, based on school performance measures:
 - ❖ These include the state's academic standards and assessments (PSSA/Keystones)

❖ Our School Designation is:

Non-Designated - We **EXITED** CSI this past year!!

SCHOOLWIDE PLAN

- ❖ The Schoolwide Plan is the school's roadmap to academic success. It details:
 - ❖ Where the school is now (data)
 - ❖ Where the school needs to go (goals)
 - ❖ How the school will get there (plan)
 - ❖ How the school will know if the plan is working (review and revise)

SCHOOLWIDE PLAN

OUR DATA

Star Reading/Math Spring (May 2023-June 2023)

**Participation in the Winter 2 (2022-23)
administration is optional for all grades.**

Academic Screeners (Star 360)
Includes aimswebPlus data through 2020-2021
Last Updated: 2022-2023 Spring (Data Through Jun 8, 2023)

Star Early Literacy and Star Reading are both eligible to count in grades K-2. In participation metrics, K-2 students count if they took either Star Math or all required CBMs. (More CBM data is available on the Subtest pages.) See "Combining Assessments" on Resources page.

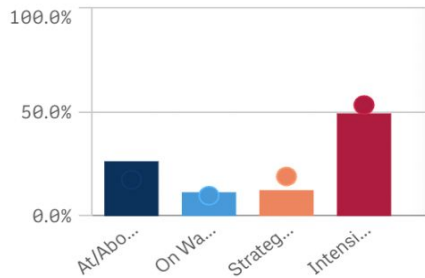
Reading: % at Highest Tier/Level

Out of 295 Results in Star, Gr. K-8, Spring 2022-2023

26.4%^{+8.9%}_{YOY}

Reading: % at Highest Tier/Level

Star, Gr. K-8, Spring 2022-2023



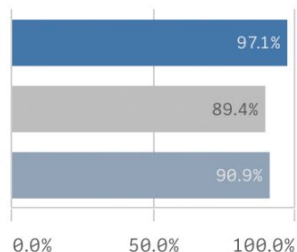
Reading: % Participation

Star, Gr. K-8, Spring 2022-2023; 316 Eligible Students

93.4%^{+3.6%}_{YOY}

Reading: % Participati...

Star, Gr. K-8, Spring 2022-2023



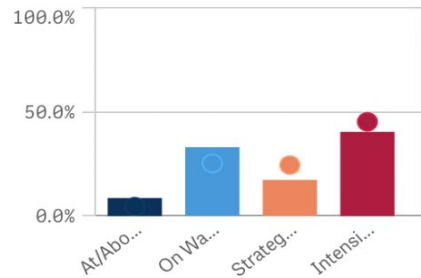
Math: % at Highest Tier/Level

Out of 229 Results in Star, Gr. K-8, Spring 2022-2023

8.7%^{+4.2%}_{YOY}

Math: % at Highest Tier/Level

Star, Gr. K-8, Spring 2022-2023



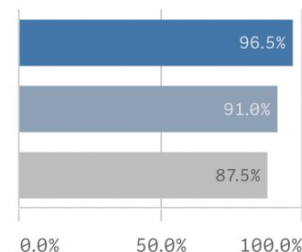
Math: % Participation

Star, Gr. K-8, Spring 2022-2023; 321 Eligible Students

92.2%^{+5.3%}_{YOY}

Math: % Participation ...

Star, Gr. K-8, Spring 2022-2023



2022- 2023 PSSA Preliminary Data

2022-2023 DATA IS PRELIMINARY and will change when SDP receives final files from PDE in late August. PASA and Best-by-11th-Grade scores are not yet available.

PSSA and Keystone Performance

Updated with **preliminary** test data for 2022-2023

Note: Due to state accountability rules introduced for 2018-19, proficient/advanced rates displayed here may differ from the rates published by the state if a school has under 95% participation in exams. Please refer to the "PSSA Participation Over Time" sheet to analyze participation data.

ELA: % Proficient or Advanced (Keystone...)

2022-2023, McKinley, William School. 201 Students.

13.9%^{-4.7%}_{YOY}

Math: % Proficient or Advanced (Keysto...)

2022-2023, McKinley, William School. 201 Students.

1.5%^{-3.6%}_{YOY}

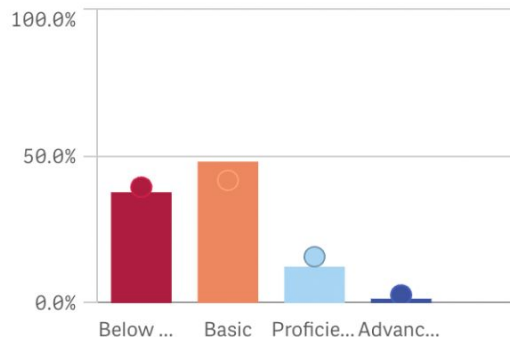
Science: % Proficient or Advanced (Keys...)

2022-2023, McKinley, William School. 66 Students.

18.2%^{+2.3%}_{YOY}

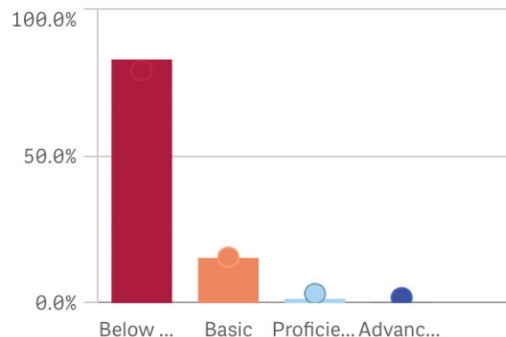
ELA: % of Students by Performance Level

2022-2023 (Bars) v. 2021-2022 (Circles), McKinley, William School.



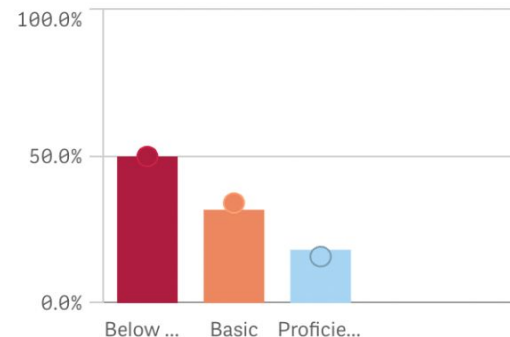
Math: % of Students by Performance Level

2022-2023 (Bars) v. 2021-2022 (Circles), McKinley, William School.



Science: % of Students by Performance Level

2022-2023 (Bars) v. 2021-2022 (Circles), McKinley, William School.



Student Attendance

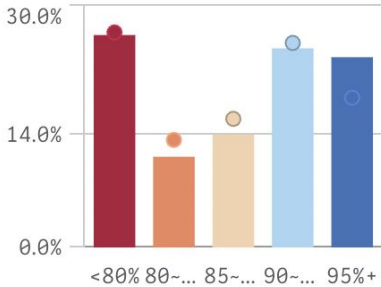
% of Students with 95%+ Att...

Out of 364 Students; 2022-2023 through Jun.; SDP: 36.6%

23.6%^{+5.0%}_{YOY}

% of Students by % Days Atte...

2022-2023 (Bars) v. 2021-2022 (Circles), through Jun.



Reported at the School level (McKinley, William School).

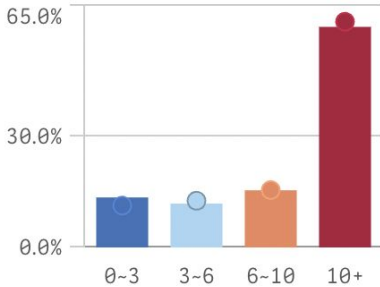
% of Students Chronically Tr...

Out of 364 Students; 2022-2023 through Jun.; SDP: 41.8%

59.3%^{-1.4%}_{YOY}

% of Students by # Unexcus...

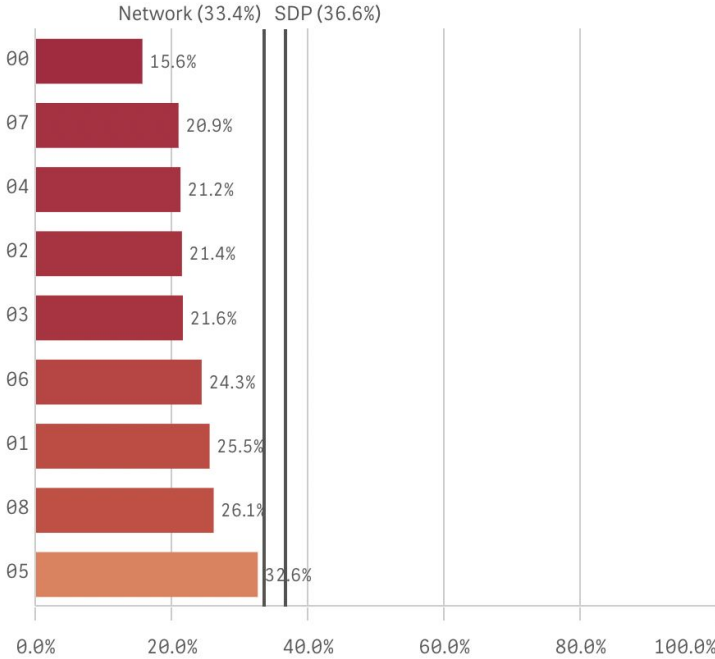
2022-2023 (Bars) v. 2021-2022 (Circles), through Jun.



Reported at the School level (McKinley, William School).

% of Students Attending 95% or More Days

Out of 364 Students; 2022-2023 through Jun.; SDP: 36.6%, by Network, School, and Grade Level



Reported at the School level.

Climate Data

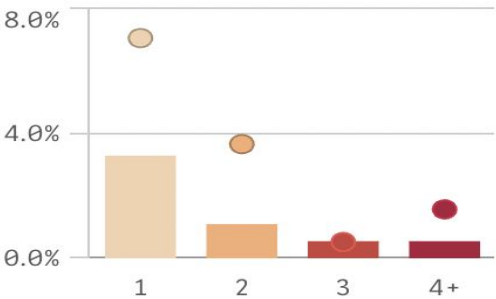
% of Students with Zero OSS

Out of 364 Students; 2022-2023 through Jun.; SDP: 94.2%

94.5%^{+7.3%}_{YOY}

% of Students by # of OSS

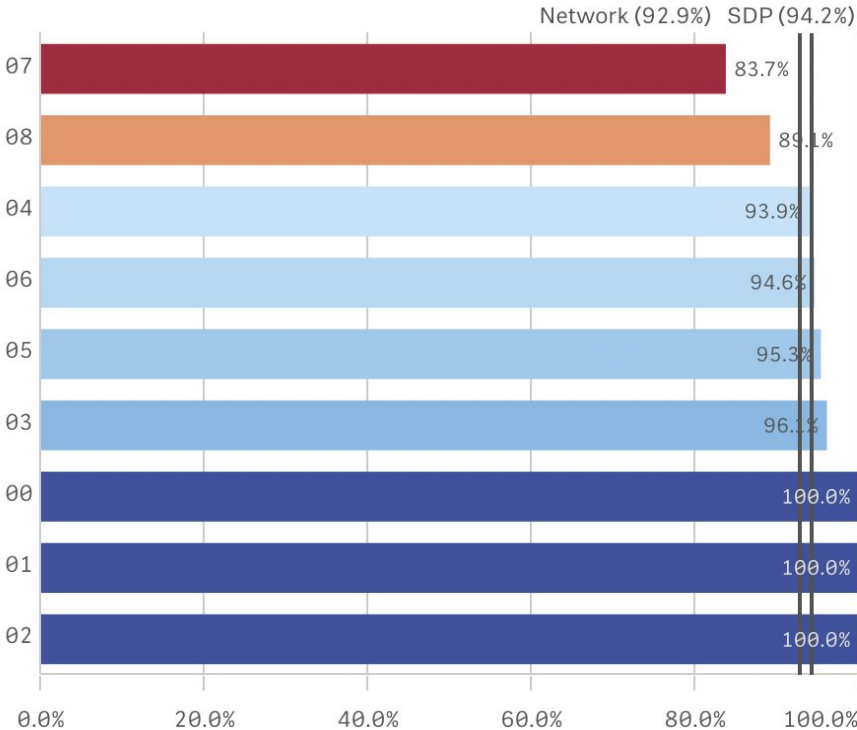
2022-2023 (Bars) v. 2021-2022 (Circles), through Jun.



Reported at the School level (McKinley, William School).

% of Students with Zero Out-of-School Suspensions

Out of 364 Students; 2022-2023 through Jun., by Network, School, and Grade Level



SCHOOLWIDE PLAN

OUR GOALS

McKinley School Goals

School Goal 1:

At least 32% of grade 3-8 students will score proficient/advanced on the ELA PSSA

School Goal 2:

At least 26% of grade 3 students will score proficient/advanced on the ELA PSSA

School Goal 3:

At least 17% of grade 3-8 students will score proficient/advanced on the Math PSSA

School Goal 4:

At least 50% of all students will attend school 90% of days or more

School Goal 5:

At least 95% of students will have zero out-of-school suspensions

SCHOOLWIDE PLAN

OUR APPROACHES

Instructional Responsibilities

NEW Math Curriculum

Tracking ALL Student Data

Professional Learning Communities

MTSS week (Academics, Behavior/Mental Health & Attendance)

ESOL/SPED Accommodations

Social-Emotional Learning/Community Meetings

Naviance 3rd-8th grades (PA Career Readiness)

The Goal:

ALL students making progress

SCHOOL BUDGETS AND SET-ASIDE REQUIREMENTS

- ❖ Title I expenditures must support the school's core academic program to ensure a well-rounded education. They should be aligned with the Schoolwide Plan.
 - ❖ Parents must be involved in the discussions regarding how these funds will best support improving academic achievement.
- ❖ 1% set aside for Parent and Family Engagement
 - ❖ Parents must be involved in the discussions regarding how these funds will best support them in working with their child at home to improve achievement.

SCHOOL TITLE I SPENDING

- ❖ Our School plans to spend this year's Title I funds on...
 - 180 Days of Reading Work Books K-5
 - Writing Journals K-8
 - Math Journals K-8

- ❖ Our School plans to spend this year's Parent funds on...
 - Summer Bridge Books

PARENT AND FAMILY ENGAGEMENT ACTIVITIES

- ❖ Our Planned Parent Engagement Activities for the coming year include...
 - Monthly Parent Meetings
 - Classroom Parents
 - Fun Nights

TEACHER & PARAPROFESSIONAL QUALIFICATIONS

❖ **Appropriately State Certified Teachers:**

- ❖ Certified by passing state examination (PRAXIS)
- ❖ BA degree
- ❖ Area of certification must match the teaching assignment

❖ **To be hired, all paraprofessionals must be Appropriately State Certified:**

- ❖ Completed two years of higher education study, OR
- ❖ Hold an Associate Degree, OR
- ❖ Pass a rigorous, formal assessment

RIGHT TO KNOW QUALIFICATIONS

- ❖ You have the right to request the qualifications of your child's teacher and any instructional paraprofessionals that work with your child.
- ❖ To learn the qualifications of these staff members, please make an appointment with the principal.

RIGHT TO KNOW 4 WEEK LETTER

- ❖ You will be notified in writing when your child is taught for 4 or more consecutive weeks by a teacher who is not Appropriately State Certified.

STATE ACADEMIC STANDARDS AND ASSESSMENTS

❖ Our State Assessments are...

- PSSA, PASA, ACCESS

❖ During report card conferences your child's teacher will discuss the State's academic content standards. These conferences will be held on...

- November, February, & April

CURRICULUM

- Our school's curriculum is...
 - SDP's ELA Framework
 - Illustrative Math

- You can support student learning at home.
 - Read 15-20 each night
 - Make sure HW is completed
 - Work on iReady Online Program daily/weekly

OUR SCHOOL NEEDS YOU!

- ❖ Learn about our **Title I** program and review documents in our Title I binder located in the main office (available by request during closure)
- ❖ Take advantage of what **Title I** has to offer
- ❖ Get involved in your child's education

You, your child, and our school can be a winning team!